

Input
Throughput
Output



DDP 70e
Digital Document Publisher

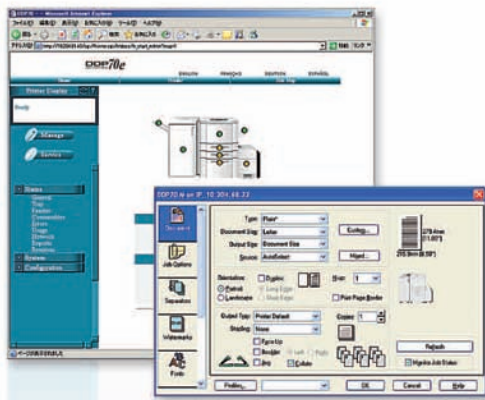
High Speed Printing for Production Intensive Environments

The DDP 70e is a very reliable print engine from Ricoh that delivers performance and reliability with an easy to use interface and professional, publishing-quality finishing. It features an engine that supports peak printing volumes up to 600,000 pages per month.



Network Connectivity and Performance

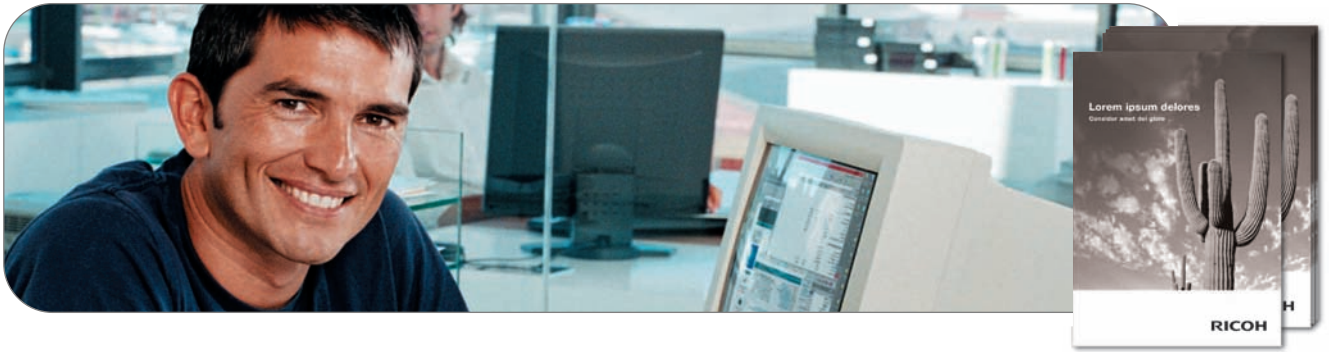
The DDP 70e is supercharged by a powerful, high performance print controller developed by Ricoh. Based on an 800 MHz PowerPC processor with high speed 64 bits memory architecture, the controller enables the DDP 70e to run at its full rated speed. Standard emulations include PCL5e, Adobe® PostScript® 3™ is available as an option and the patented Virtual Printer Technology (VPT®) is also supported. This feature enables a single printer to support up to 64 print services or 'virtual printers'.



Advanced Print Drivers and Web Utilities

The Ricoh bi-directional print drivers feature a graphical user interface for maximum printer control right from your workstation. Offering PostScript® and PCL, these dynamic, feature-rich drivers enable end-to-end document production, including simplified post document page insertion, front and back covers. Friendly web utilities provide access to the printer through the Internet or Intranet. Status of the printer and system functions are available through an embedded web server.

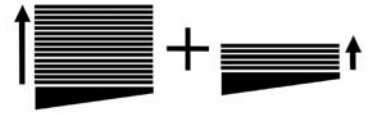




Online, Offline Finishing

The Ricoh Standard Finisher lets you print and finish your documents all in one pass. You get high productivity with minimal speed reduction for A4 for all staple positions. All major paper sizes can be stapled with up to a 50-sheet stapling capacity. Stacking capacity is 2,500 sheets with offset, plus 200 non-stapled sheets. The DDP 70e combined with one or two Container Stackers allows you to run very large production jobs unattended.

When you add a pair of Container Stackers to your production printer you can feed, print and stack up to six thousand sheets without worrying about continuous operator support. The baskets provide you with a convenient way to transport the output to the finishing equipment for those production jobs that require offline finishing.



Stacking capacity is 2,500 sheets with offset, plus 200 non-stapled sheets.



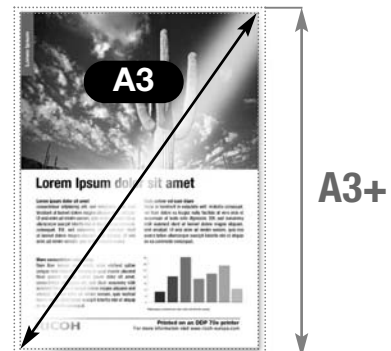
Your Digital Document Factory

Designed for high volume applications like print on-demand, the DDP 70e features an engine life of 20,000,000 images and can print 1.2 million pages before the first engine PM cycle. Built to last, the DDP 70e's industrial strength components ensure that you get the highest quality output page after page.



Multi-bypass tray:
150 sheets

3,000 sheets



Wide Media Range

The DDP 70e offers unprecedented media flexibility. Manual covers on heavy stock, even tab dividers, can be printed from any main body tray, allowing you to generate sophisticated, integrated documents in a single pass. Paper sizes up to 355.6 x 457.2 mm (SRA3) allow you to print full-bleed A3 layouts with trim marks and the standard 3,150 sheet input capacity assures uninterrupted printing of high volume runs.



Specifications



GENERAL

Print speed (simplex/duplex):	A4/LEF:	70/35 ppm
	A4/SEF:	40/20 ppm
	A3:	35/18 ppm
Dimensions (W x D x H):	1,543 (1,917 including high capacity feeder) x 665 x 1,151 mm (with Standard Finisher)	
Weight:	239 kg (including high capacity feeder)	
Power source:	200 - 240 V, 50/60 Hz	
Power consumption:	Operation:	2.4 kW (at 220 V)
	Energy saver mode:	75 W (at 200 - 240 V)
Duty cycle:	600,000 images per month	

CONTROLLER

Processor:	800 MHz PowerPC 750FX processor with 256 MB RAM, 40 GB HDD	
Resolution:	600 x 600 dpi	
Printer language:	PCL5e, TIFF, PDF Adobe® PostScript® 3™ (optional)	
Embedded web server:	Real time device monitoring and configuration	
Drivers:	Windows®:	Mercury driver: Windows® 95/98/2000/NT4.0/XP/Server 2003 Standard PCL5 driver: Windows® 2000/XP/Server 2003 PPD (Adobe® PostScript®): Windows® 95/98/2000/NT4.0/XP
	Macintosh:	PPD: Macintosh OS X

CONNECTIVITY

Network protocol:	Standard:	TCP/IP
Interface:	Ethernet 10 base-T/100 base-TX/1000 base-T Bi-directional IEEE 1284	

PAPER HANDLING

Paper input capacity:	Paper tray 1:	2,000 sheets
	Paper tray 2:	500 sheets
	Paper tray 3:	500 sheets
	Bypass tray:	150 sheets
	High capacity feeder (option):	3,000 A4 sheets (LEF) (80 g/m ²)
	Maximum:	6,150 sheets
Paper output capacity:	Standard:	2,700 sheets
Paper size:	Paper tray 1:	B5 to 355.6 x 457.2 mm ¹
	Paper tray 2 - 3:	A5 to 355.6 x 457.2 mm ¹
Paper weight:	Input tray:	60 - 199 g/m ²
	Bypass tray:	64 - 199 g/m ²

CONSUMABLES

Toner:	36,000 prints/bottle ²
Developer:	480,000 images (600,000 drum rotation time)
Drum:	400,000 images (500,000 drum rotation time)

OPTIONS

Standard Finisher:	Multi-position stapling, stacking, offset Face-up/face-down stacking Elevator tray:	2,500 sheets
	Top tray:	200 sheets (non-stapled)
	Container Stackers:	Add up to two container stackers (4 containers) for production that requires offline finishing Holds A4 and A3 paper sizes up to 6,000 pages (80 g/m ²) maximum
Controller options:	Adobe® PostScript® 3™	

¹ Includes SRA3.
² A4 with 5% coverage.

For availability of models, optional apparatus and software, please consult your local Ricoh supplier.



ISO9001: 2000 certified
ISO14001 certified

VPT® is a registered trademark of Ricoh Printing Systems America, Inc.

Ricoh believes in conserving the earth's precious natural resources. This brochure is printed on environmentally friendly paper: 50% recycled fibres, 50% chlorine free bleached pulp.

This product complies with EU RoHS directive (RoHS: Restriction of Hazardous Substances, effective from July 2006).

All brand and/or product names are trademarks of their respective owners.

Specifications and external appearance are subject to change without notice. The colour of the actual product may vary from the colour shown in the brochure.

Copyright © 2006 Ricoh Europe B.V. All rights reserved. This brochure, its contents and/or layout may not be modified and/or adapted, copied in part or in whole and/or incorporated into other works without the prior written permission of Ricoh Europe B.V.

RICOH

For more information, please contact:

RICOH EUROPE B.V.
P.O. Box 114, 1180 AC Amstelveen,
The Netherlands.
Phone: +31 (0)20 54 74 111
Fax: +31 (0)20 54 74 222

www.ricoh-europe.com