

Input
Throughput
Output



DDP 92
Digital Document Publisher

High Speed Printing for Production Intensive Environments

The DDP 92 is a true workhorse that can handle the production printing needs of high volume environments that require professional level finishing and the highest throughput. It features a 92 ppm print speed and delivers high quality images at 600 x 600 dpi on sheet sizes up to 304.8 x 457.2 mm (A3+). Finished documents can incorporate duplex printing, cover sheets, folding and multi position stapling. Saddle-stitched booklets can be created from both A3 and A4 sheets. It features an engine that supports peak printing volumes up to 800,000 pages per month.



Your Digital Document Factory

Designed for high volume applications like print on-demand and system printing requirements, the DDP 92 features an engine life of 30,000,000 images and can print 1.2 million pages before the first printer engine PM cycle. Built to last, the DDP 92's industrial strength components ensure that you get the highest quality output, page after page.



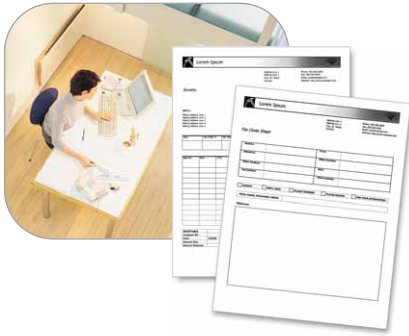
Network Connectivity and Performance

Ricoh redefines the way you think about production printing. The DDP 92, a powerful 92 page per minute workhorse printer offers industrial strength printing for production intensive environments. The DDP 92 incorporates a high performance print controller, web utilities, custom bi-directional drivers, and an extensive range of capabilities and finishing options. All of this is designed to significantly improve your productivity and lower your total printing costs.



Professional Quality Booklets with Booklet Maker

Online finishing for the DDP 92 includes a Booklet Maker, which supports on-demand and sheet insertion, and produces small or large booklets. Up to 20 regular sized five sheet booklets may be delivered to the special output stacker.

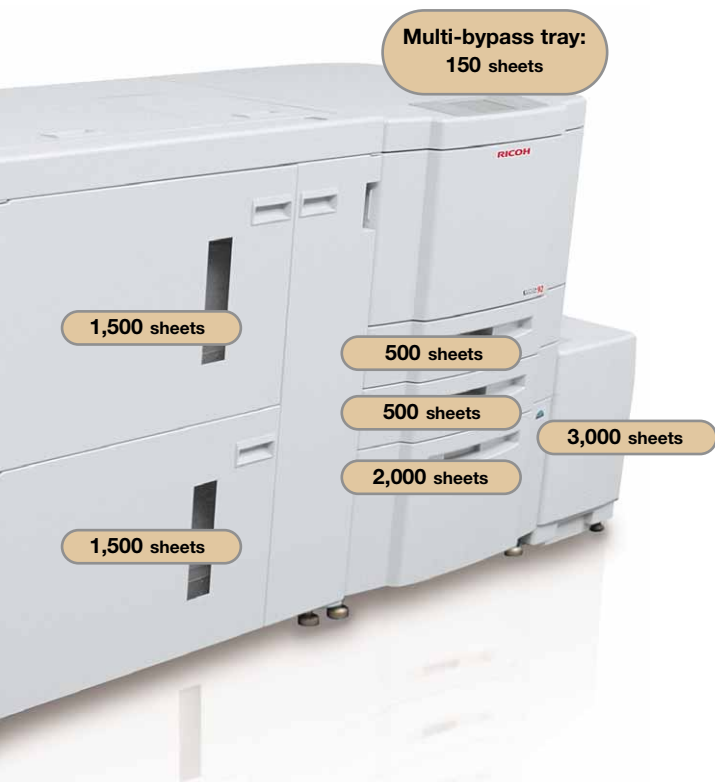
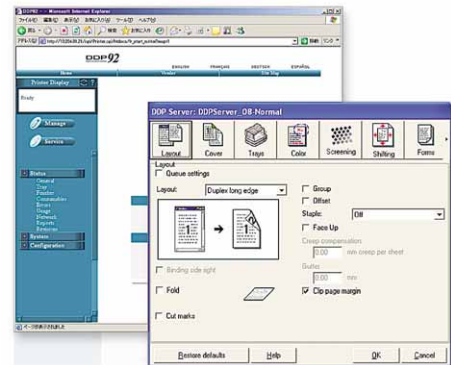


Intelligent Forms

Reduce printing costs, move green bar paper reports and pre printed forms to laser printer pages. Custom printed standard and multi part forms are expensive, why not create or modify your own forms quickly and effectively? Reduce labour costs by eliminating storage, transport and handling costs associated with custom printed forms and green bar paper. Now you can print your custom forms on-demand when you need them!

Advanced Print Drivers and Web Utilities

The Ricoh bi-directional print drivers feature a graphical user interface for maximum printer control right from your workstation. Offering PostScript® and PCL, these dynamic, feature-rich drivers enable end-to-end document production, including simplified post document page insertion, front and back covers, and tab stock printing. Friendly web utilities provide access to the printer through the Internet or Intranet. Status of the printer and system functions are available through an embedded web server.

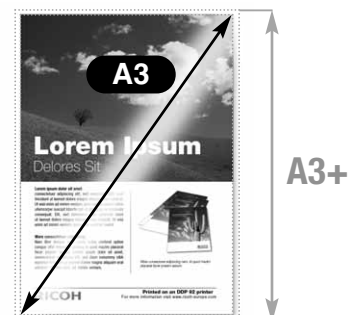


Online, Offline Finishing

The Ricoh Standard Finisher lets you print and finish your documents all in one pass. You get high productivity with multi position stapling. All major paper sizes can be stapled with up to a 50-sheet stapling capacity. Stacking capacity is 2,500 sheets with offset, plus 200 non-stapled sheets. The DDP 92 combined with one or two Container Stackers allows you to run very large production jobs unattended. When you add a pair of Container Stackers to your production printer you can feed, print and stack up to six thousand sheets without worrying about continuous operator support. The baskets provide you with a convenient way to transport the output to the finishing equipment for those production jobs that require offline finishing.

Wide Media Range

The DDP 92 offers unprecedented media flexibility. Manual covers on heavy stock, even tab dividers, can be printed from any main body tray, allowing you to generate sophisticated, integrated documents in a single pass. Paper sizes up to 304.8 x 457.2 mm (A3+) allow you to print full-bleed 279.4 x 431.8 mm A3 layouts with trim marks and the standard 3,150 sheet input capacity assures uninterrupted printing of high volume runs.





Specifications



GENERAL

Print speed (simplex/duplex):	A4/LEF: 92/46 ppm A4/SEF: 50/25 ppm A3: 46/23 ppm
Dimensions (W x D x H):	1,543 (1,917, high capacity feeder included) x 665 x 1,151 mm (with Booklet Maker)
Weight:	254 kg (high capacity feeder included)
Power source:	200 - 240 V, 50/60 Hz
Power consumption:	Operation: 2.4 kW (at 220 V) Energy saver mode: 75 W (at 200 - 240 V)
Duty cycle:	800,000 images per month

CONTROLLER

Processor:	375 MHz PowerPC 750 processor with 256 MB RAM, 40 GB HDD
Resolution:	600 x 600 dpi
Printer language:	PCL5e, TIFF, PDF, Adobe® PostScript® 3™ (optional)
Embedded web server:	Real time device monitoring and configuration
Drivers:	Windows®: Mercury driver: Windows® 95/98/2000/NT 4.0/XP/Server 2003 Standard PCL5 driver: Windows® 2000/XP/Server 2003 PPD (Adobe® PostScript®): Windows® 95/98/2000/NT 4.0/XP Macintosh: PPD: Macintosh OS 8.x/9.x

CONNECTIVITY

Network protocol:	Standard: TCP/IP Option: IPX/SPX, EtherTalk
Interface:	Ethernet 10 base-T/100 base-TX Bi-directional IEEE 1284

PAPER HANDLING

Paper input capacity:	Paper tray 1: 2,000 sheets Paper tray 2: 500 sheets Paper tray 3: 500 sheets Bypass tray: 150 sheets High capacity feeder (option): 3,000 A4 sheets (LEF) (75 g/m ²) Maximum: 6,150 sheets
Paper output capacity:	Standard: 2,700 sheets
Paper size:	Paper tray 1: B5 to 304.8 x 457.2 mm (A3+) (75 g/m ²) Paper tray 2 - 3: A5 to 304.8 x 457.2 mm (A3+) (75 g/m ²)
Paper weight:	Input tray: 60 - 199 g/m ² Bypass tray: 64 - 199 g/m ²

CONSUMABLES

Toner:	45,000 prints/bottle
Developer:	480,000 images (600,000 drum rotation time)
Drum:	400,000 images (500,000 drum rotation time)

OPTIONS

Standard Finisher:	Multi-position stapling, stacking, offset Elevator tray: 2,500 sheets Top tray: 200 sheets (non-stapled)
Booklet Maker and Inserter:	Saddle-stitch stapling, centre folding, stacker and sheet insertion Booklets up to 15 sheets of 75 g/m ² . Plus 1 cover page of 199 g/m ² (index) stock Inserter tray capacity: 200 sheets (128 g/m ²) Paper size: B5 (LEF), A4 (LEF/SEF) B4 (SEF), A3 (SEF) Paper weight for inserter: 60 - 199 g/m ² (index)
Container Stackers	Add up to two container stackers (4 containers) for production that requires offline finishing Holds A4 and A3 paper sizes up to 6,000 pages (75 g/m ²) maximum
Controller options:	Adobe® PostScript® 3™, Multi-protocol NIC

For availability of models, optional apparatus and software, please consult your local Ricoh supplier.



ISO9001: 2000 certified
ISO14001 certified

Ricoh has determined that this product meets the ENERGY STAR guidelines for energy efficiency.

Ricoh believes in conserving the earth's precious natural resources.

All brand and/or product names are trademarks of their respective owners.

Specifications and external appearance are subject to change without notice. The colour of the actual product may vary from the colour shown in the brochure.

Copyright © 2005 Ricoh Europe B.V. All rights reserved. This brochure, its contents and/or layout may not be modified and/or adapted, copied in part or in whole and/or incorporated into other works without the prior written permission of Ricoh Europe B.V.

RICOH

For more information, please contact:

RICOH EUROPE B.V.
P.O. Box 114, 1180 AC Amstelveen,
The Netherlands.
Phone: +31 (0)20 54 74 111
Fax: +31 (0)20 64 18 601

www.ricoh-europe.com